



NATA LIGHTING CO.,LTD.
www.nata.cn
Email:info@nata.com
Tel:+86-750-3770000 Fax:+86-750-3771111
Address:380JinOu Road,GaoXin Zone,Jiang Men City,Guangdong,China

NT

Client:

LumCAT: 1-1380-L

Luminaire: 92.70.410.00

Report No: 20231109-B018

Ballast type: AC

Test No: 20231109-C018

Voltage(V): 34.720

LampCAT: Fortimo_SLM_C_1204

Current(A): 0.320

Lamp flux(lm): 1771.7

Power (W): 11.110

Number of Lamps: 1

PF: 0.000

Length(mm): 0

Width(mm): 0

Phm Type: C

Height(mm): 0

Photometric Results

Lumens(lm): 1645.04, Efficiency(%): 92.85% , Luminous Efficacy(lm/W): 148.07

Central intensity(cd): 2335.576, Maximum intensity(cd): 2335.576

Angle of maximum intensity: C=0.0 γ =0.0

Beam Angle(50%Imax): [C0/180]Total=52.0

[C90/270]Total=52.0

Field angle(10%Imax): [C0/180]Total=71.6

[C90/270]Total=71.6

Beam angle of C0 plane : 52.08

Aveage BeamAngle(IEC 61341):52.08

Maximum s/h(1/2): C0_180=0.86 C90_270=0.86

Maximum s/h(1/4): C0_180=0.77 C90_270=0.77

Up flux rate of lamp(%): 0.00%

Down flux rate of lamp(%): 92.85%

Up flux rate of LUM(%): - -

Down flux rate of LUM(%): 100.00%

CIE Type : Direct lighting

Output flux ratio in π solid angle : 97.992%

Equipment: GMS1980
Temperature(°C): 0.0

Date: 2023/11/09
Humidity(%): 0.0%

Operator: NT07
Distance(m): 7.44

$\gamma(^{\circ})$	Average I(cd)	Zonal F(lm)	Sum F(lm)	Eff Flux(%)	Eff Sum(%)
0.0	2335.576	0.000	0	0.00%	0.00%
1.0	2329.072	2.232	2.232	0.13%	0.14%
2.0	2315.579	6.666	8.898	0.38%	0.54%
3.0	2310.598	11.064	19.963	0.62%	1.21%
4.0	2306.446	15.455	35.417	0.87%	2.15%
5.0	2297.728	19.807	55.224	1.12%	3.36%
6.0	2284.512	24.081	79.305	1.36%	4.82%
7.0	2269.705	28.268	107.573	1.60%	6.54%
8.0	2250.331	32.349	139.922	1.83%	8.51%
9.0	2224.592	36.267	176.189	2.05%	10.71%
10.0	2201.343	40.053	216.242	2.26%	13.15%
11.0	2174.843	43.727	259.969	2.47%	15.80%
12.0	2149.865	47.275	307.244	2.67%	18.68%
13.0	2125.371	50.736	357.981	2.86%	21.76%
14.0	2099.147	54.073	412.054	3.05%	25.05%
15.0	2066.142	57.183	469.237	3.23%	28.52%
16.0	2033.830	60.076	529.313	3.39%	32.18%
17.0	1995.705	62.751	592.064	3.54%	35.99%
18.0	1952.944	65.105	657.168	3.67%	39.95%
19.0	1900.566	67.043	724.212	3.78%	44.02%
20.0	1836.010	68.390	792.601	3.86%	48.18%
21.0	1756.231	68.978	861.58	3.89%	52.37%
22.0	1658.809	68.627	930.206	3.87%	56.55%
23.0	1564.777	67.640	997.846	3.82%	60.66%
24.0	1420.304	65.265	1063.111	3.68%	64.63%
25.0	1289.393	61.613	1124.723	3.48%	68.37%
26.0	1172.064	58.103	1182.826	3.28%	71.90%
27.0	1069.106	54.831	1237.657	3.09%	75.24%
28.0	948.546	51.083	1288.739	2.88%	78.34%
29.0	811.505	46.048	1334.787	2.60%	81.14%
30.0	693.401	40.632	1375.42	2.29%	83.61%
31.0	572.474	35.227	1410.647	1.99%	85.75%
32.0	477.930	30.093	1440.74	1.70%	87.58%
33.0	390.457	25.583	1466.323	1.44%	89.14%
34.0	318.546	21.457	1487.779	1.21%	90.44%
35.0	266.915	18.182	1505.962	1.03%	91.55%
36.0	227.047	15.728	1521.689	0.89%	92.50%
37.0	184.300	13.416	1535.105	0.76%	93.32%

$\gamma(^{\circ})$	Average I(cd)	Zonal F(lm)	Sum F(lm)	Eff Flux(%)	Eff Sum(%)
38.0	131.008	10.525	1545.63	0.59%	93.96%
39.0	105.677	8.079	1553.709	0.46%	94.45%
40.0	86.739	6.711	1560.419	0.38%	94.86%
41.0	72.465	5.669	1566.088	0.32%	95.20%
42.0	60.661	4.837	1570.925	0.27%	95.49%
43.0	52.171	4.180	1575.105	0.24%	95.75%
44.0	45.445	3.684	1578.789	0.21%	95.97%
45.0	39.986	3.283	1582.072	0.19%	96.17%
46.0	35.620	2.957	1585.029	0.17%	96.35%
47.0	32.271	2.700	1587.729	0.15%	96.52%
48.0	29.317	2.490	1590.219	0.14%	96.67%
49.0	26.964	2.311	1592.53	0.13%	96.81%
50.0	25.110	2.171	1594.701	0.12%	96.94%
51.0	23.477	2.056	1596.757	0.12%	97.07%
52.0	22.024	1.952	1598.709	0.11%	97.18%
53.0	20.848	1.865	1600.574	0.11%	97.30%
54.0	19.817	1.792	1602.367	0.10%	97.41%
55.0	18.862	1.727	1604.093	0.10%	97.51%
56.0	18.087	1.670	1605.763	0.09%	97.61%
57.0	17.381	1.622	1607.384	0.09%	97.71%
58.0	16.738	1.578	1608.962	0.09%	97.81%
59.0	16.156	1.538	1610.5	0.09%	97.90%
60.0	15.617	1.501	1612.001	0.08%	97.99%
61.0	15.139	1.468	1613.469	0.08%	98.08%
62.0	14.669	1.436	1614.905	0.08%	98.17%
63.0	14.267	1.407	1616.312	0.08%	98.25%
64.0	13.845	1.379	1617.692	0.08%	98.34%
65.0	13.492	1.353	1619.045	0.08%	98.42%
66.0	13.105	1.327	1620.372	0.07%	98.50%
67.0	12.780	1.302	1621.673	0.07%	98.58%
68.0	12.448	1.278	1622.951	0.07%	98.66%
69.0	12.136	1.254	1624.206	0.07%	98.73%
70.0	11.853	1.232	1625.438	0.07%	98.81%
71.0	11.555	1.210	1626.647	0.07%	98.88%
72.0	11.251	1.186	1627.833	0.07%	98.95%
73.0	10.953	1.161	1628.994	0.07%	99.02%
74.0	10.649	1.136	1630.13	0.06%	99.09%
75.0	10.358	1.110	1631.24	0.06%	99.16%

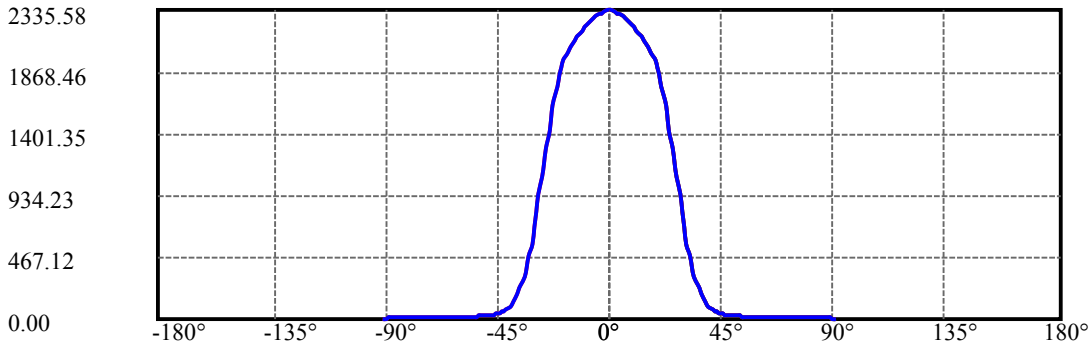
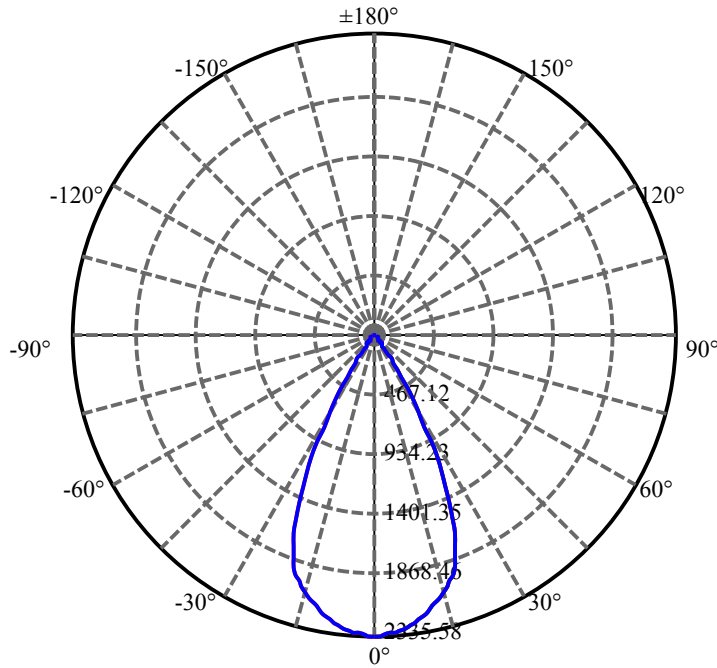
$\gamma(^{\circ})$	Average I(cd)	Zonal F(lm)	Sum F(lm)	Eff Flux(%)	Eff Sum(%)
76.0	10.074	1.085	1632.325	0.06%	99.23%
77.0	9.791	1.059	1633.384	0.06%	99.29%
78.0	9.514	1.033	1634.417	0.06%	99.35%
79.0	9.244	1.008	1635.425	0.06%	99.42%
80.0	9.009	0.984	1636.409	0.06%	99.48%
81.0	8.732	0.959	1637.368	0.05%	99.53%
82.0	8.531	0.936	1638.304	0.05%	99.59%
83.0	8.310	0.916	1639.22	0.05%	99.65%
84.0	8.075	0.893	1640.113	0.05%	99.70%
85.0	7.839	0.869	1640.981	0.05%	99.75%
86.0	7.660	0.847	1641.828	0.05%	99.80%
87.0	7.480	0.829	1642.657	0.05%	99.86%
88.0	7.300	0.810	1643.467	0.05%	99.90%
89.0	7.148	0.792	1644.258	0.04%	99.95%
90.0	7.065	0.779	1645.038	0.04%	100.00%

ZONAL LUMEN SUMMARY

Zone	Lumens	%Lamp	%Fixt
0-30	1375.42	77.63%	83.61%
0-40	1560.42	88.08%	94.86%
0-60	1612.00	90.99%	97.99%
0-90	1644.26	92.81%	99.95%
0-120	1644.26	92.81%	99.95%
0-180	1645.04	92.85%	100.00%
60-90	32.26	1.82%	1.96%
90-120	0.00	0.00%	0.00%
90-130	0.00	0.00%	0.00%
90-150	0.00	0.00%	0.00%
90-180	0.00	0.00%	0.00%
0-28.59	1316.03	74.28%	80.00%

ZONAL LUMEN SUMMARY

0-10	216.24
10-20	576.36
20-30	582.82
30-40	185.00
40-50	34.28
50-60	17.30
60-70	13.44
70-80	10.97
80-90	7.85
90-100	0.00
100-110	0.00
110-120	0.00
120-130	0.00
130-140	0.00
140-150	0.00
150-160	0.00
160-170	0.00
170-180	0.00



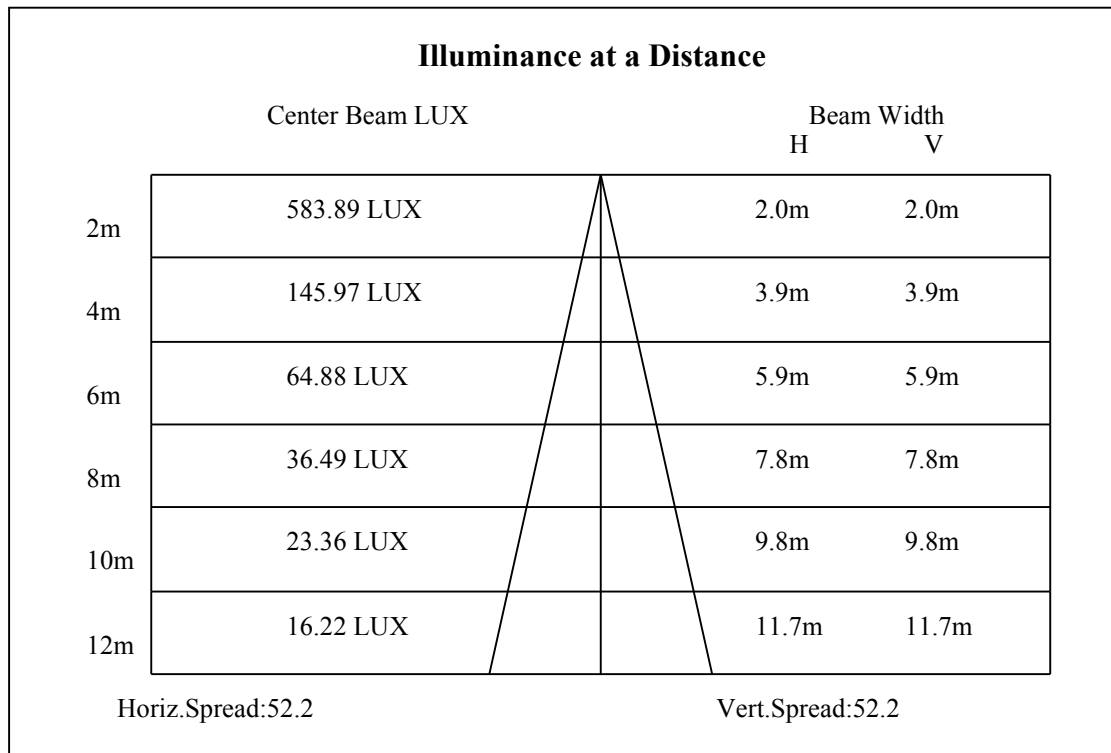
C0(Max): —————

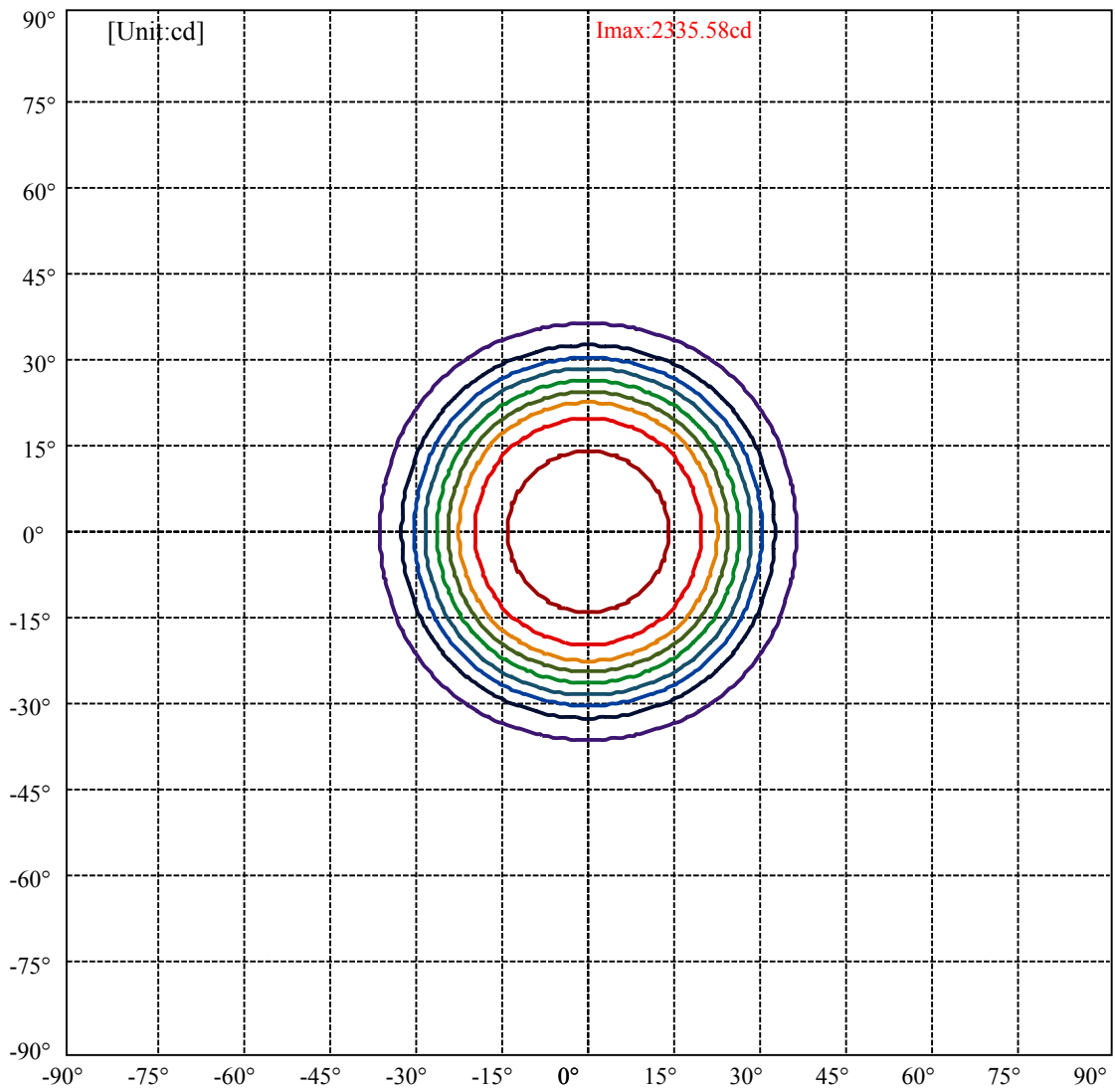
C0/C180: —————

C90/C270: —————

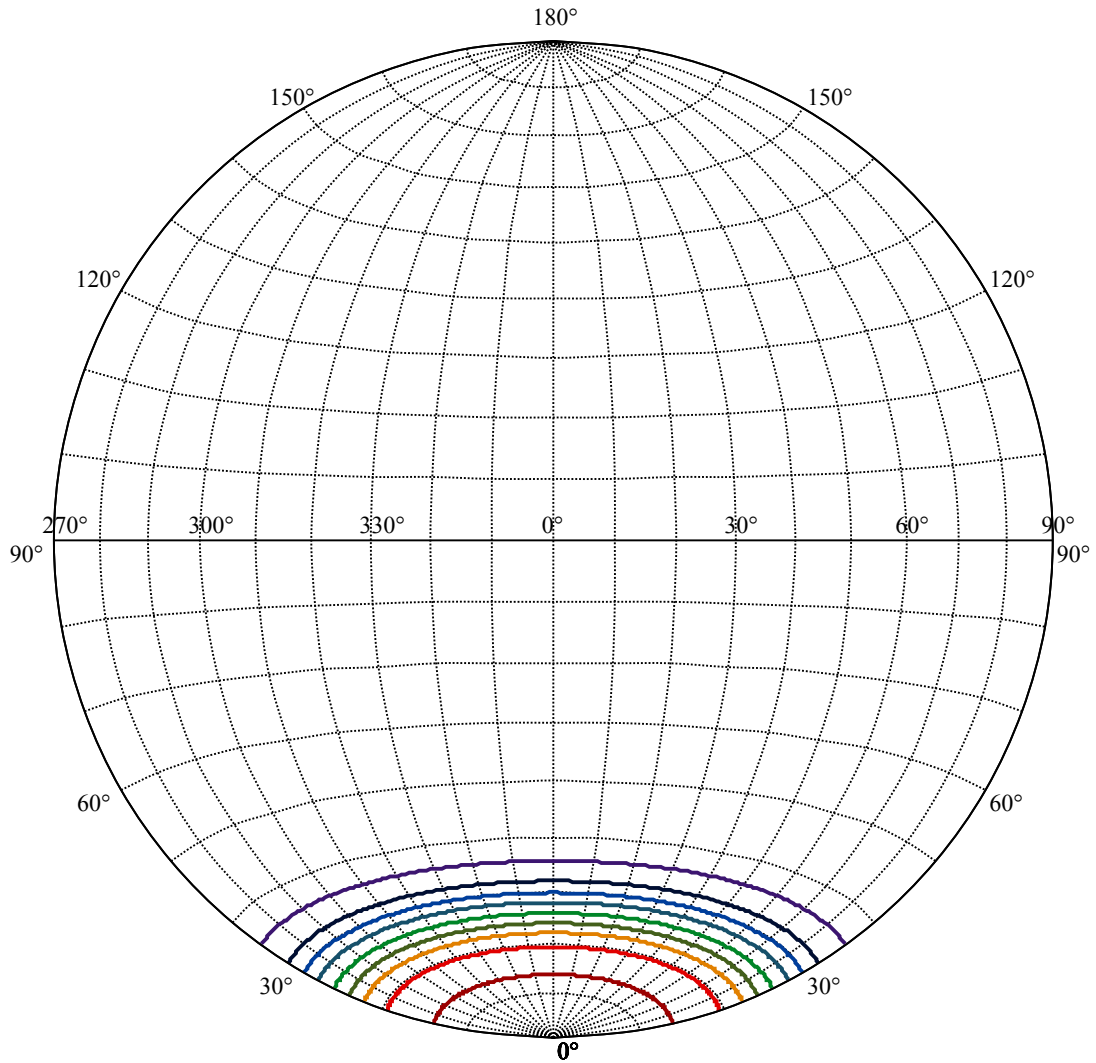
Field angle(10%Imax):C0/180Left:35.8 Right:35.8
:C90/270Left:35.8 Right:35.8

Beam Angle(50%Imax):C0/180Left:26.0 Right:26.0
:C90/270Left:26.0 Right:26.0





(10%Imax) 233.558	—
(20%Imax) 467.115	—
(30%Imax) 700.673	—
(40%Imax) 934.23	—
(50%Imax) 1167.79	—
(60%Imax) 1401.35	—
(70%Imax) 1634.9	—
(80%Imax) 1868.46	—
(90%Imax) 2102.02	—



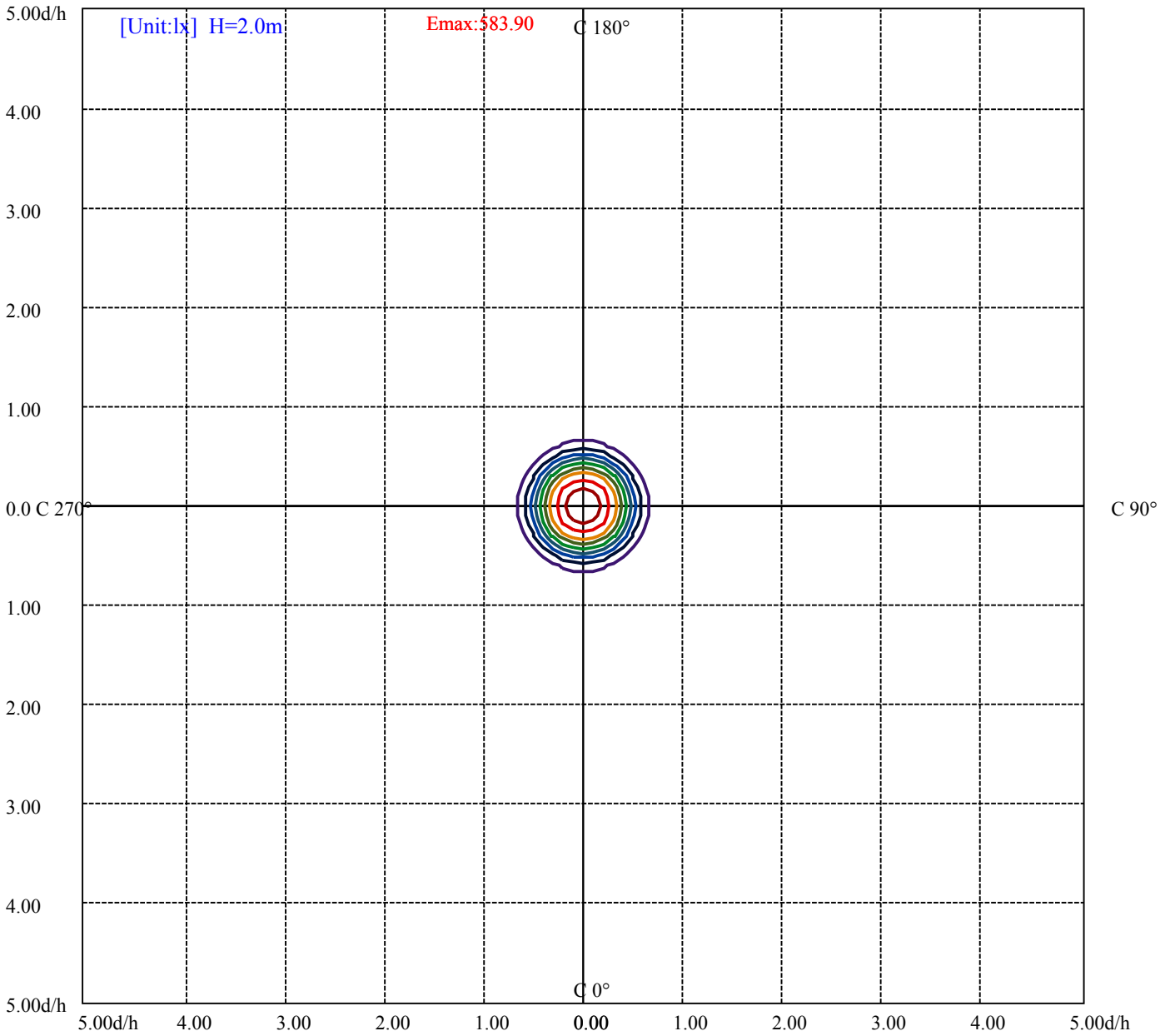
House

[Unit:cd]

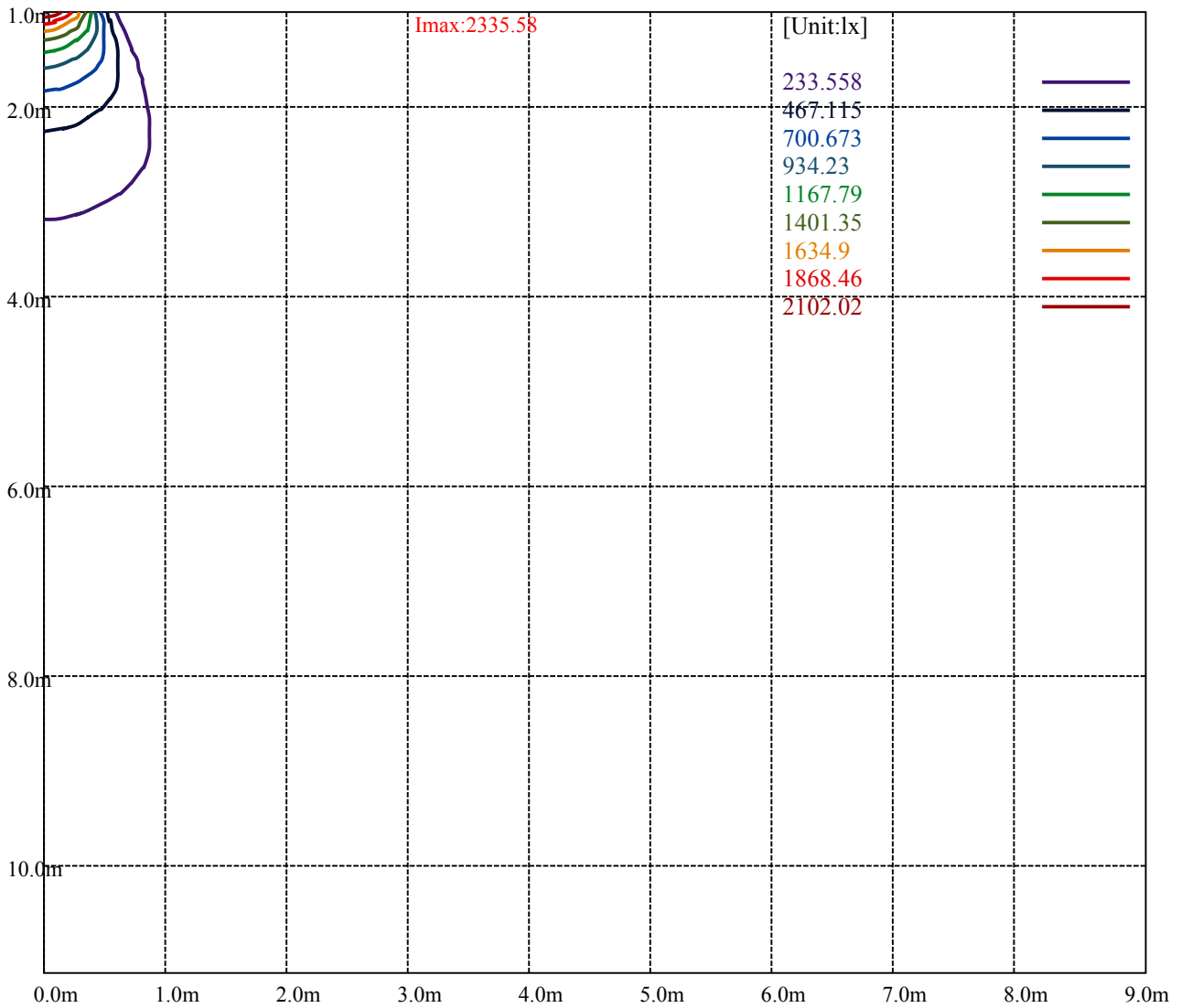
Road

Imax:2335.58

(10%Imax)	233.558	—
(20%Imax)	467.115	—
(30%Imax)	700.673	—
(40%Imax)	934.23	—
(50%Imax)	1167.79	—
(60%Imax)	1401.35	—
(70%Imax)	1634.9	—
(80%Imax)	1868.46	—
(90%Imax)	2102.02	—



(10%Emax) 58.38925	—
(20%Emax) 116.7787	—
(30%Emax) 175.168	—
(40%Emax) 233.5575	—
(50%Emax) 291.9475	—
(60%Emax) 350.335	—
(70%Emax) 408.725	—
(80%Emax) 467.115	—
(90%Emax) 525.505	—



Luminance Table

γ	45	50	55	60	65	70	75	80	85
C0	0	0	0	0	0	0	0	0	0
C45	0	0	0	0	0	0	0	0	0
C90	0	0	0	0	0	0	0	0	0

L(Hor)(65)	L(Ver)(65)	L45(65)	L(Hor)(75)	L(Ver)(75)	L45(75)	L(Hor)(85)	L(Ver)(85)	L45(85)
0	0	0	0	0	0	0	0	0

Glare Table

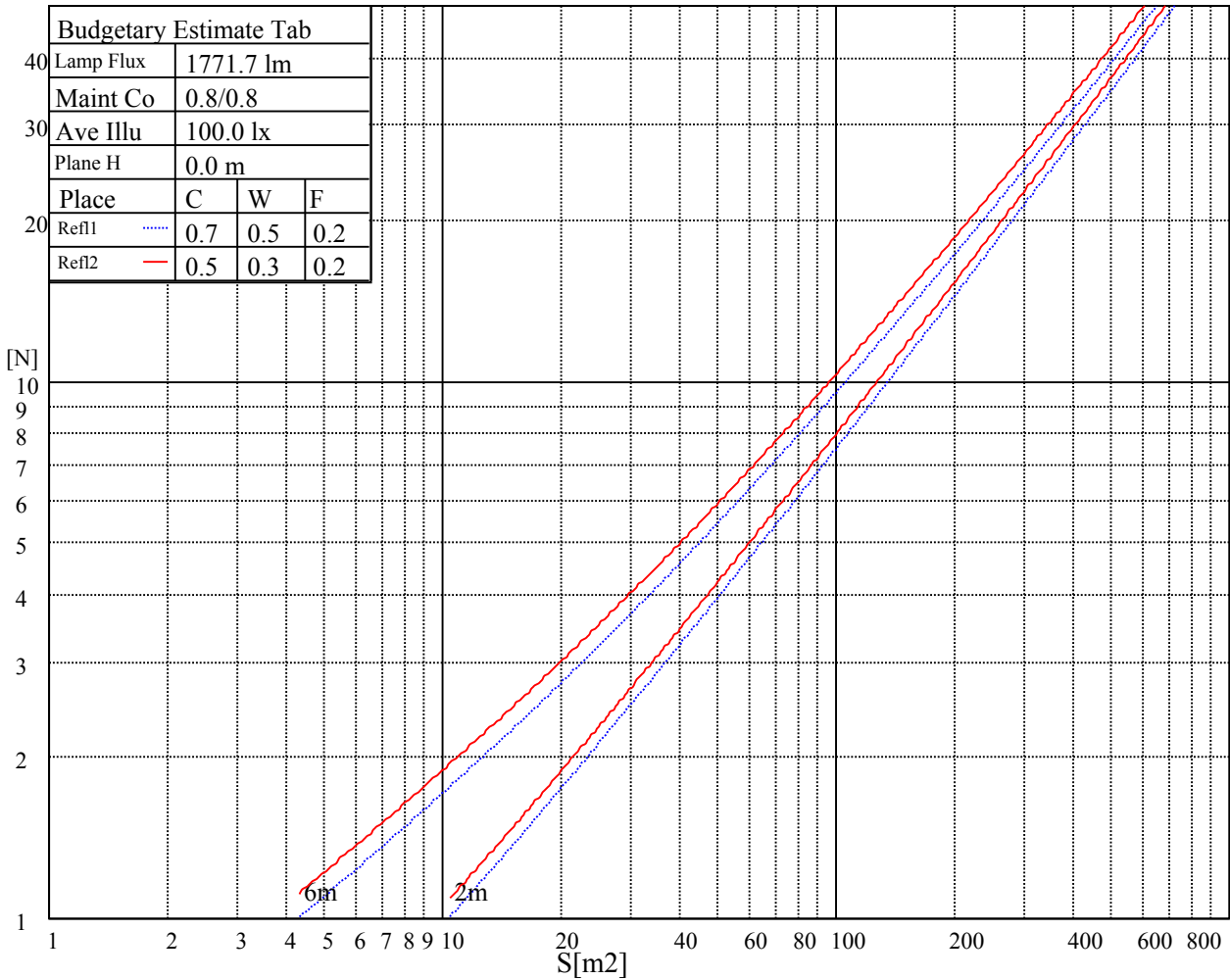
Glare	Quality	Service Values Illuminance(lx)							
1.15	A	2000	1000	500	<=300				
1.5	B		2000	1000	500	<=300			
1.85	C			2000	1000	500	<=300		
2.2	D				2000	1000	500	<=300	
2.55	E					2000	1000	500	<=300
		a	b	c	d	e	f	g	h

Luminance Limiting Curve

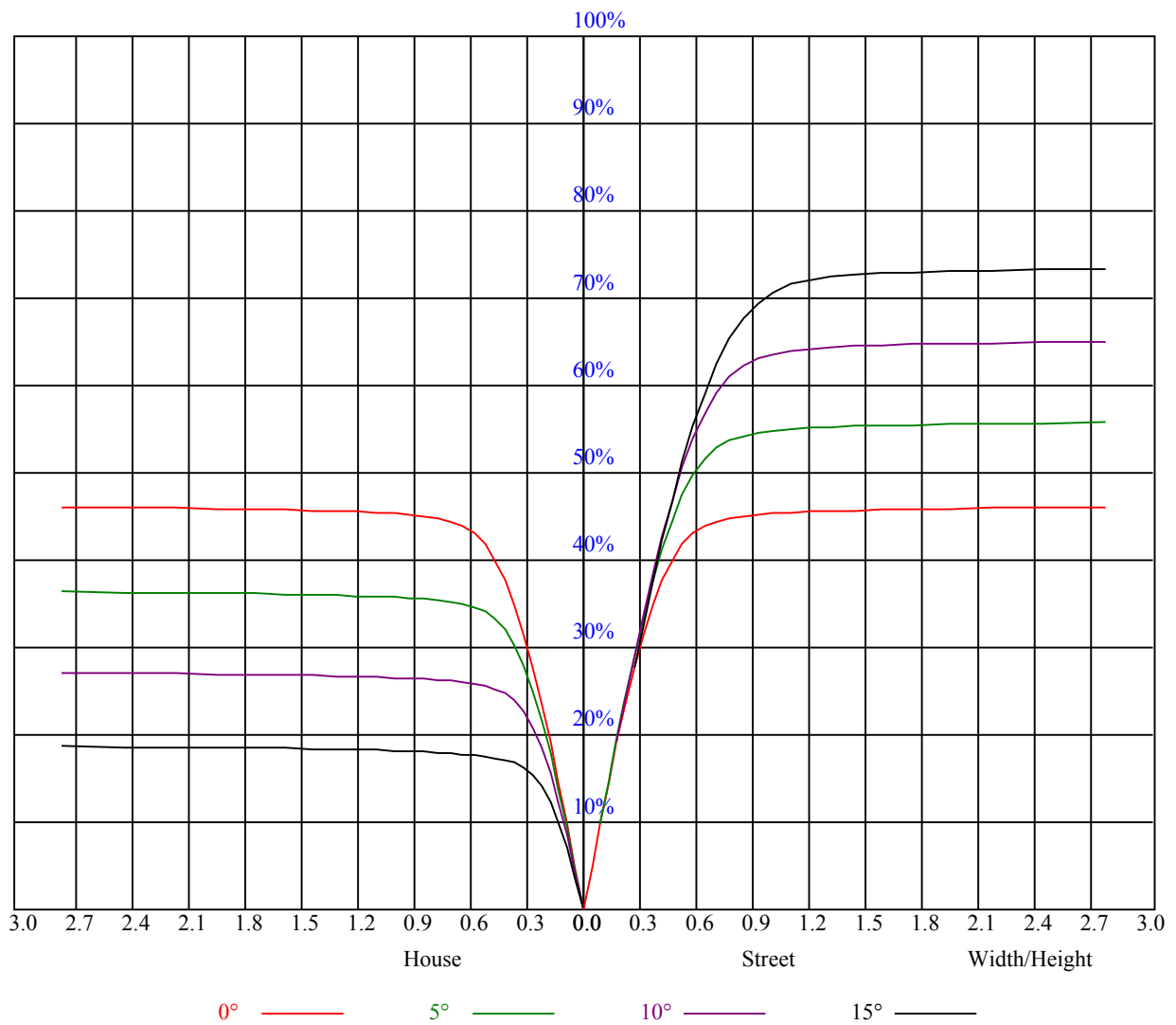


Illumination assessment according UGR											
Rf of Ceiling	70	70	50	50	30	70	70	50	50	30	
Rf of Wall	50	30	50	30	30	50	30	50	30	30	
Rf of Floor	20	20	20	20	20	20	20	20	20	20	
Room dimensions		Viewed crosswise					Viewed endwise				
X	Y										
2H	2H	非数字	非数字	非数字	非数字	非数字	非数字	非数字	非数字	非数字	非数字
	3H	非数字	非数字	非数字	非数字	非数字	非数字	非数字	非数字	非数字	非数字
	4H	非数字	非数字	非数字	非数字	非数字	非数字	非数字	非数字	非数字	非数字
	6H	非数字	非数字	非数字	非数字	非数字	非数字	非数字	非数字	非数字	非数字
	8H	非数字	非数字	非数字	非数字	非数字	非数字	非数字	非数字	非数字	非数字
4H	12H	非数字	非数字	非数字	非数字	非数字	非数字	非数字	非数字	非数字	非数字
	2H	非数字	非数字	非数字	非数字	非数字	非数字	非数字	非数字	非数字	非数字
	3H	非数字	非数字	非数字	非数字	非数字	非数字	非数字	非数字	非数字	非数字
	4H	非数字	非数字	非数字	非数字	非数字	非数字	非数字	非数字	非数字	非数字
	6H	非数字	非数字	非数字	非数字	非数字	非数字	非数字	非数字	非数字	非数字
8H	8H	非数字	非数字	非数字	非数字	非数字	非数字	非数字	非数字	非数字	非数字
	12H	非数字	非数字	非数字	非数字	非数字	非数字	非数字	非数字	非数字	非数字
	4H	非数字	非数字	非数字	非数字	非数字	非数字	非数字	非数字	非数字	非数字
	6H	非数字	非数字	非数字	非数字	非数字	非数字	非数字	非数字	非数字	非数字
	8H	非数字	非数字	非数字	非数字	非数字	非数字	非数字	非数字	非数字	非数字
12H	12H	非数字	非数字	非数字	非数字	非数字	非数字	非数字	非数字	非数字	非数字
	4H	非数字	非数字	非数字	非数字	非数字	非数字	非数字	非数字	非数字	非数字
	6H	非数字	非数字	非数字	非数字	非数字	非数字	非数字	非数字	非数字	非数字
8H	非数字	非数字	非数字	非数字	非数字	非数字	非数字	非数字	非数字	非数字	
Variation with the observer position at spacings:											
S = 1.0H		非数字/非数字					非数字/非数字				
S = 1.5H		非数字/非数字					非数字/非数字				
S = 2.0H		非数字/非数字					非数字/非数字				
Standard tables:		BK0					BK0				
Uncorrected UGR		负无穷大					负无穷大				

UGR calculation is based on CIE Publ. 117 ,S/H = 0.25



RHOCC	80			70			50			30			10			0
RHOW	50	30	10	50	30	10	50	30	10	50	30	10	50	30	10	0
RCR	COEFFICIENTS OF UTILIZATION RHOF=20 CU															
0	1.11	1.11	1.11	1.08	1.08	1.08	1.03	1.03	1.03	0.99	0.99	0.99	0.95	0.95	0.95	0.93
1	1.03	1.01	0.99	1.01	0.99	0.97	0.97	0.96	0.94	0.94	0.92	0.91	0.91	0.90	0.89	0.87
2	0.96	0.93	0.90	0.95	0.91	0.89	0.92	0.89	0.87	0.89	0.87	0.85	0.86	0.85	0.83	0.82
3	0.90	0.86	0.83	0.89	0.85	0.82	0.87	0.83	0.81	0.85	0.82	0.79	0.82	0.80	0.78	0.77
4	0.85	0.80	0.77	0.84	0.80	0.76	0.82	0.78	0.75	0.80	0.77	0.74	0.79	0.76	0.74	0.72
5	0.80	0.75	0.72	0.80	0.75	0.71	0.78	0.74	0.71	0.76	0.73	0.70	0.75	0.72	0.69	0.68
6	0.76	0.71	0.67	0.75	0.71	0.67	0.74	0.70	0.67	0.73	0.69	0.66	0.72	0.68	0.66	0.64
7	0.72	0.67	0.63	0.72	0.67	0.63	0.70	0.66	0.63	0.69	0.65	0.63	0.68	0.65	0.62	0.61
8	0.69	0.63	0.60	0.68	0.63	0.60	0.67	0.63	0.60	0.66	0.62	0.59	0.65	0.62	0.59	0.58
9	0.65	0.60	0.57	0.65	0.60	0.57	0.64	0.60	0.56	0.63	0.59	0.56	0.62	0.59	0.56	0.55
10	0.62	0.57	0.54	0.62	0.57	0.54	0.61	0.57	0.54	0.60	0.56	0.54	0.60	0.56	0.53	0.52



Intensity data(cd)

C/γ(°)	0.0	1.0	2.0	3.0	4.0	5.0	6.0	7.0	8.0
0.0	2324.85	2310.46	2312.67	2307.14	2294.96	2272.82	2252.34	2229.64	2198.09
45.0	2346.44	2328.73	2302.71	2300.50	2294.41	2276.69	2261.19	2243.48	2216.36
90.0	2324.85	2298.84	2299.39	2301.05	2280.57	2262.86	2236.84	2214.70	2185.36
135.0	2345.89	2328.17	2308.25	2313.78	2308.80	2298.84	2289.42	2278.91	2254.55
180.0	2324.85	2351.42	2341.46	2320.98	2315.44	2321.53	2317.10	2304.37	2297.17
225.0	2346.44	2340.35	2318.76	2312.67	2322.08	2317.10	2309.91	2294.96	2282.23
270.0	2324.85	2348.10	2339.24	2315.99	2316.55	2328.17	2319.32	2311.57	2303.26
315.0	2346.44	2326.51	2302.16	2312.67	2318.76	2303.82	2289.98	2280.01	2265.62
360.0	2324.85	2310.46	2312.67	2307.14	2294.96	2272.82	2252.34	2229.64	2198.09
C/γ(°)	9.0	10.0	11.0	12.0	13.0	14.0	15.0	16.0	17.0
0.0	2160.45	2138.86	2117.28	2089.04	2055.83	2024.28	1992.18	1953.43	1901.40
45.0	2185.91	2153.26	2117.83	2094.03	2066.35	2045.32	2023.17	1994.39	1961.73
90.0	2148.27	2125.02	2097.35	2066.90	2039.78	2014.32	1990.52	1958.41	1919.66
135.0	2231.30	2203.63	2181.49	2162.67	2135.54	2103.99	2056.94	2023.73	1983.32
180.0	2280.01	2262.30	2241.82	2215.80	2201.41	2181.49	2143.84	2114.51	2081.85
225.0	2271.71	2256.21	2224.66	2202.52	2184.81	2169.86	2136.10	2112.29	2087.94
270.0	2289.98	2275.59	2248.46	2222.45	2198.09	2169.86	2139.42	2104.54	2069.67
315.0	2229.09	2195.88	2169.86	2145.51	2121.15	2084.06	2046.98	2009.34	1960.07
360.0	2160.45	2138.86	2117.28	2089.04	2055.83	2024.28	1992.18	1953.43	1901.40
C/γ(°)	18.0	19.0	20.0	21.0	22.0	23.0	24.0	25.0	26.0
0.0	1853.24	1774.64	1702.12	1616.33	1495.10	1391.59	1103.20	1103.20	1009.59
45.0	1925.20	1879.81	1798.99	1725.37	1646.77	1561.53	1441.41	1335.13	1215.01
90.0	1859.88	1803.42	1733.67	1657.84	1541.60	1438.09	1242.69	1087.26	1055.59
135.0	1945.68	1898.07	1832.20	1727.59	1636.81	1536.06	1403.21	1287.52	1167.96
180.0	2038.67	1997.16	1953.98	1891.43	1791.80	1698.80	1598.61	1493.99	1356.72
225.0	2043.65	1990.52	1927.97	1827.22	1741.42	1648.43	1524.99	1418.16	1094.12
270.0	2043.10	2007.12	1945.13	1882.02	1794.56	1713.75	1621.31	1485.69	1373.32
315.0	1914.13	1853.79	1794.01	1722.05	1622.41	1529.97	1427.02	1104.19	1104.19
360.0	1853.24	1774.64	1702.12	1616.33	1495.10	1391.59	1103.20	1103.20	1009.59
C/γ(°)	27.0	28.0	29.0	30.0	31.0	32.0	33.0	34.0	35.0
0.0	884.50	766.59	630.48	533.94	449.36	376.18	297.03	244.00	188.42
45.0	1055.59	928.83	811.48	675.31	575.68	464.42	385.81	315.52	284.52
90.0	927.01	775.01	664.24	565.88	455.62	376.74	308.15	248.32	190.69
135.0	1041.75	912.23	756.13	642.66	522.54	438.40	366.44	290.61	290.61
180.0	1238.81	1115.38	953.74	822.00	668.67	561.29	467.18	371.42	308.87
225.0	1094.12	1029.47	899.66	775.17	633.41	534.27	443.99	367.88	285.40
270.0	1267.60	1140.28	977.54	847.46	719.60	605.57	483.24	400.76	329.35
315.0	1043.47	920.59	798.75	684.78	554.92	466.58	371.81	309.87	257.45
360.0	884.50	766.59	630.48	533.94	449.36	376.18	297.03	244.00	188.42
C/γ(°)	36.0	37.0	38.0	39.0	40.0	41.0	42.0	43.0	44.0
0.0	153.44	126.04	99.80	84.14	71.52	60.67	50.43	44.06	39.08
45.0	284.52	151.45	121.39	99.25	77.94	65.93	56.90	49.76	42.73
90.0	154.88	126.15	104.18	83.36	71.02	61.55	52.25	45.67	40.57
135.0	227.17	154.10	120.23	99.75	83.53	67.86	58.18	50.37	44.17
180.0	280.09	280.09	158.48	129.53	107.11	89.12	71.68	61.28	53.08
225.0	230.38	185.82	142.04	114.19	88.79	73.29	62.33	53.64	45.61
270.0	283.41	283.41	163.35	125.21	102.57	84.80	68.75	59.06	51.48
315.0	202.48	167.33	138.61	109.99	91.44	76.50	64.76	53.53	46.83
360.0	153.44	126.04	99.80	84.14	71.52	60.67	50.43	44.06	39.08

Intensity data(cd)

C/γ(°)	45.0	46.0	47.0	48.0	49.0	50.0	51.0	52.0	53.0
0.0	35.20	31.27	28.78	26.68	24.47	23.03	21.75	20.43	19.48
45.0	38.19	33.71	30.67	28.23	25.68	23.97	22.53	21.37	20.09
90.0	35.54	32.33	29.67	27.01	25.19	23.64	22.36	20.92	20.04
135.0	38.36	34.54	31.44	28.34	26.18	24.47	22.69	21.48	20.48
180.0	46.33	39.80	35.65	31.72	29.23	27.12	24.85	23.41	22.09
225.0	40.68	36.59	33.21	29.72	27.51	25.63	24.02	22.25	21.15
270.0	44.06	39.25	35.48	32.22	29.06	26.96	25.19	23.64	21.98
315.0	41.52	37.47	33.27	30.61	28.40	26.07	24.41	22.69	21.48
360.0	35.20	31.27	28.78	26.68	24.47	23.03	21.75	20.43	19.48
C/γ(°)	54.0	55.0	56.0	57.0	58.0	59.0	60.0	61.0	62.0
0.0	18.65	17.82	17.16	16.61	16.11	15.50	15.06	14.67	14.28
45.0	19.21	18.43	17.77	16.99	16.38	15.89	15.28	14.83	14.34
90.0	19.10	18.32	17.44	16.83	16.22	15.61	15.11	14.56	14.17
135.0	19.37	18.60	17.88	17.21	16.50	16.00	15.50	15.06	14.56
180.0	21.03	19.76	18.93	18.16	17.49	16.72	16.16	15.67	15.11
225.0	19.82	18.93	18.16	17.33	16.72	16.16	15.61	15.06	14.61
270.0	20.87	19.65	18.82	18.10	17.27	16.72	16.22	15.72	15.17
315.0	20.48	19.37	18.54	17.82	17.21	16.66	16.00	15.55	15.11
360.0	18.65	17.82	17.16	16.61	16.11	15.50	15.06	14.67	14.28
C/γ(°)	63.0	64.0	65.0	66.0	67.0	68.0	69.0	70.0	71.0
0.0	13.84	13.45	13.17	12.73	12.45	12.12	11.79	11.51	11.18
45.0	14.00	13.62	13.28	12.84	12.51	12.23	11.96	11.62	11.35
90.0	13.89	13.40	13.12	12.79	12.45	12.07	11.85	11.51	11.24
135.0	14.23	13.73	13.40	13.06	12.68	12.40	12.12	11.85	11.57
180.0	14.67	14.28	13.78	13.45	13.17	12.79	12.45	12.23	11.85
225.0	14.17	13.73	13.40	13.01	12.73	12.34	12.07	11.79	11.51
270.0	14.72	14.34	13.95	13.51	13.17	12.90	12.45	12.18	11.90
315.0	14.61	14.23	13.84	13.45	13.06	12.73	12.40	12.12	11.85
360.0	13.84	13.45	13.17	12.73	12.45	12.12	11.79	11.51	11.18
C/γ(°)	72.0	73.0	74.0	75.0	76.0	77.0	78.0	79.0	80.0
0.0	10.90	10.57	10.35	10.02	9.74	9.47	9.19	8.91	8.69
45.0	11.07	10.74	10.46	10.19	9.91	9.63	9.41	9.08	8.86
90.0	10.90	10.63	10.35	10.07	9.80	9.52	9.24	8.97	8.75
135.0	11.24	10.96	10.63	10.35	10.13	9.85	9.58	9.30	9.08
180.0	11.62	11.35	11.02	10.68	10.41	10.13	9.80	9.58	9.35
225.0	11.24	10.90	10.57	10.35	10.07	9.74	9.47	9.19	8.97
270.0	11.57	11.29	10.90	10.63	10.35	10.07	9.74	9.52	9.24
315.0	11.46	11.18	10.90	10.57	10.19	9.91	9.69	9.41	9.13
360.0	10.90	10.57	10.35	10.02	9.74	9.47	9.19	8.91	8.69
C/γ(°)	81.0	82.0	83.0	84.0	85.0	86.0	87.0	88.0	89.0
0.0	8.47	8.30	8.08	7.86	7.64	7.47	7.31	7.09	7.09
45.0	8.52	8.36	8.19	7.92	7.75	7.53	7.36	7.20	7.03
90.0	8.52	8.36	8.08	7.86	7.64	7.47	7.36	7.14	7.03
135.0	8.75	8.58	8.30	8.14	7.86	7.69	7.53	7.36	7.14
180.0	9.02	8.80	8.58	8.36	8.08	7.86	7.64	7.47	7.31
225.0	8.69	8.47	8.30	8.03	7.80	7.64	7.47	7.31	7.14
270.0	9.02	8.75	8.52	8.25	7.97	7.80	7.58	7.42	7.25
315.0	8.86	8.64	8.41	8.19	7.97	7.80	7.58	7.42	7.20
360.0	8.47	8.30	8.08	7.86	7.64	7.47	7.31	7.09	7.09

Intensity data(cd)

C/γ(°)	90.0
0.0	7.14
45.0	6.97
90.0	7.03
135.0	7.09
180.0	7.14
225.0	6.97
270.0	7.03
315.0	7.14
360.0	7.14